

A middle-aged man with a grey beard and mustache is cooking in a kitchen. He is wearing a grey t-shirt and a red and white checkered apron. He is holding a wooden spoon and stirring a mixture of rice, beans, and vegetables in a large white bowl. In the background, there is a stainless steel pot on a gas stove. The scene is brightly lit, suggesting a window is nearby.

REMOVABLE PARTIAL DENTURE

The secret ingredient

His old denture was giving him nothing but frustration. A prosthodontist had the recipe for success.

REMOVABLE PARTIAL DENTURE

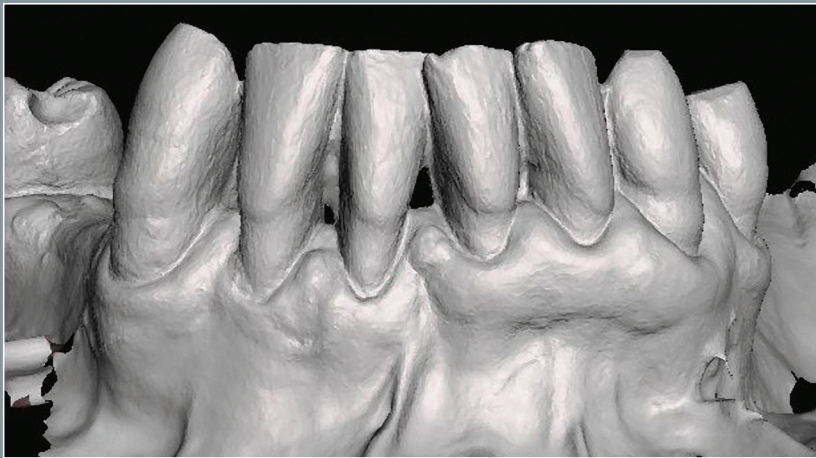


You might have a guess.
Plenty of people do. But nobody
knows the secret ingredient
in Morris's award-winning chili.

BEFORE



He was missing teeth and his old partial denture fit poorly.



The prosthodontist made a digital image of his teeth and jaw.

"One guy said he thought it was cinnamon," Morris says, disgusted. "I never spoke to that man again."

His rivals get tied up in knots trying to figure out what the secret ingredient is, but Morris says they're missing the point. The secret matters, sure, but it's his finely-tuned sense of taste that puts his chili over the top. And when that sense of taste was at risk, he had to protect it.

Morris had worn a removable partial denture on his lower jaw for years, but the fit was terrible, and he was at his wit's end with it. He had taken it in for adjustments, but nothing seemed to solve the problem.

*"It fit so bad it cut my mouth," he recalls.
"I'd have a batch simmering and check
the taste. When the sauce hit those cuts...
man, that hurt."*

Due to the constant discomfort, Morris was on the verge of giving up the denture altogether. To compensate for his missing teeth, he'd barely chew his food. He was drifting toward a softer, blander, and unsatisfying palate.



The digital image was used to create a new partial denture that fit perfectly among his existing teeth.

After a disastrous showing at a regional cook-off, a rival chef took pity and recommended visiting a prosthodontist.

Morris told the prosthodontist that he had a limited budget and did not want dental implants. He was looking for a removable partial denture that would fit well and feel secure, one that didn't chafe his mouth and wouldn't be difficult to clean.

The prosthodontist began by analyzing Morris's teeth. An intraoral scanner was used to create a detailed digital image of his lower jaw. The scanner caused no discomfort or gagging, and the scan did not take long.

"I had no idea there were dentists who used this kind of technology," he says. "It was like second nature for her. I kept waiting for the hard part to come, but it never did."

Using this digital image, the prosthodontist generated a 3D-printed cast of Morris's jaw. The cast matched the contours of his mouth to the smallest detail. She used the cast to create a new removable partial denture whose fit was customized for him.



The new removable partial denture fit well and looked great. He could speak and chew with ease.

Next, the prosthodontist prepared Morris's existing teeth for the new removable partial denture. Tiny indentations were made in a few of his teeth. The clasps for the removable partial denture would rest comfortably in these barely-visible indentations.

The prosthodontist worked with a dental laboratory to create the prosthesis and the realistic-looking teeth that would be placed on it.

At his next visit, Morris tried on the prosthesis. She used his feedback to create the final removable partial denture, which was made from a durable, easy-to-clean plastic.

In what felt like no time at all, his brand new removable partial denture was ready to be delivered. The prosthodontist showed him how to clean it and keep it in good condition.

One year later, it has needed only minimal adjustments. It still fits great - and it's keeping pace with his adventurous diet.

*"My new partial changed everything," he says.
"Not a day goes by that I don't feel the difference."*
