

DOESN'T YOUR SMILE DESERVE A SPECIALIST'S CARE?

Before making a decision about cosmetic or reconstructive dental work carefully research your options to ensure the best possible results. The American Dental Association considers prosthodontists experts in many facets of restorative dental care. Prosthodontists are qualified to offer state-of-the-art procedures and techniques including:

- Dental implants
- Cosmetic dentistry
- Complete and removable partial dentures
- Lost teeth replacement
- Complex care involving multiple specialists
- Maxillofacial prosthetic procedures such as oral cancer reconstruction and continuing care

Prosthodontists expertly restore and replace teeth by:

- Training three additional years in an ADA-accredited graduate program after completing dental school.
- Quarterbacking the dental treatment plan. They regularly lead teams of general dentists, specialists and other health professionals to develop solutions to your dental needs.
- Creating generations of beautiful, healthy smiles by providing the highest level of dental care.

FIND A PROSTHODONTIST TODAY



The American College of Prosthodontists offers the No. 1 referral directory for locating a prosthodontist in your area. Search by ZIP code or desired procedure at www.gotoapro.org.

ACP members strive to provide the highest quality of patient care, work closely with other dental professionals to provide the most comprehensive and effective treatments, and

improve the quality of patients' lives through the advancement of prosthodontics.

211 E. Chicago Ave.
Suite 1000
Chicago, IL 60611
312.573.1260
800.378.1260
www.gotoapro.org

compliments of

© 2008 American College of Prosthodontists

perfect your smile

Do you feel self-conscious about your smile?

Do you cover your mouth when you talk?

Do you close your lips when the camera shutter opens?



A PROSTHODONTIST CAN HELP

As American Dental Association recognized specialists in the esthetic restoration and replacement of teeth, prosthodontists direct and produce your smile makeover.

ACP
AMERICAN COLLEGE OF
PROSTHODONTISTS®

PLAN A RESTORATION

GRIN EAR TO EAR

SHINE THOSE PEARLY WHITES

No Need to Hide Your Smile

Stop the self-consciousness and diverting actions. With the desire for a greater-than-ever, more natural-looking smile, exciting new products and procedures allow prosthodontists to restore, and even improve, your teeth's natural beauty and strength.

Perfect your smile by replacing stained, chipped, missing or worn teeth with inlays, crowns, veneers, bridges and implants with the most advanced restorative materials.

Restore Teeth with Natural-looking Crowns

When a tooth exhibits moderate to severe destruction such as a large filling with recurrent decay or extensive wear, a crown, also known as a cap, gives you the strength, beauty, translucency and feel of a natural tooth. Made from a variety of materials, your prosthodontist can help determine the correct crown for your mouth.

Replace Defective Fillings with Inlays

Defective or unsightly "fillings" can be replaced by all-ceramic inlays ... a tooth-colored material bonded to the tooth. Instead of using the more traditional cement, this bonding process may actually improve the strength and beauty of the tooth.

Replace Missing Teeth with Bridges and Implants

From implants to permanent bridges, you have several options to replace missing teeth and blend them with your natural teeth. Using advanced materials and tooth-color-matching techniques, your prosthodontist can recommend the appropriate method for optimal function and esthetics.

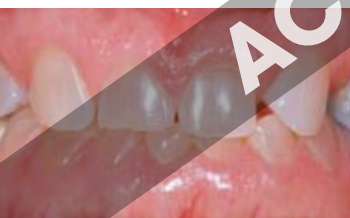
Brighten Your Smile with Teeth Whitening

Tooth whitening lightens discolored enamel and dentin. Studies have shown that proper use of dentist-monitored, whitening systems can enhance your smile. Almost anyone can benefit. After a thorough oral examination and diagnosis your prosthodontist can determine if you are a good candidate for home whitening.

Create a Beautiful Smile with Veneers

Not happy with the alignment, color or shape of your teeth? Consider ceramic veneers. Following a slight preparation of the enamel, a prosthodontist bonds a thin layer of porcelain permanently to the front of your teeth. Veneers may be used to correct minor flaws of individual teeth, but often are used on multiple teeth to create a uniform smile.

crowns



BEFORE



AFTER

implants



BEFORE



AFTER

veneers



BEFORE



AFTER